



EMSA's Integrated Maritime Services

Rijeka / 23-24 August 2016





Integrated Maritime Services (IMS)

- Configurable, voluntary, functionalities, *promoting regional, national and local cooperation, providing an enhanced maritime picture*, using the integration capability, following the agreed access rights and responding to the data users specific needs.
- These functionalities foster the *sharing and exchange of data* between different users and applications and provide additional, complementary and supportive tools. They do not replace any existing systems and mandatory system functionalities.
- IMS are offered to EU Member States, following a *functional* approach, i.e. IMS are offered to all EU Member States authorities executing functions in the maritime domain.



Integrated Maritime Services (IMS)

- IMS provide functionalities for the purpose described in Annex III of the Directive 2002/59/EC as amended. i.e. *maritime safety, marine environment protection, port and maritime security, efficiency of maritime traffic and maritime transport and regional, national and local cooperation for the exchange of additional information.*

Function

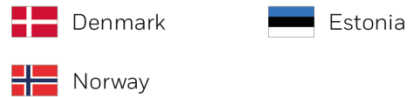
- Allocated task and/or responsibility which requires and justifies the *use of particular maritime data sets, information and functionalities*, in line with the access rights and the existing legal framework.
- The function is *independent of the governmental department/authority* in which users are based and is associated to the task and/or responsibility the users are in charge of.

Member States part of IMS MS Service

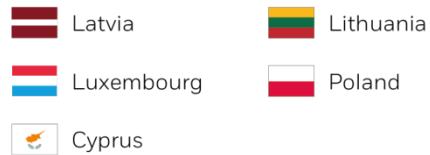
22

TOTAL OF MS INVOLVED IN IMS OVER 4 YEARS

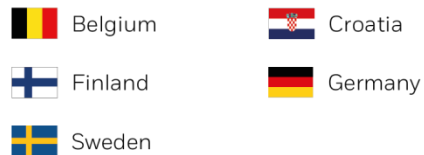
2016



2015



2014



2013



Overall distribution of IMS users



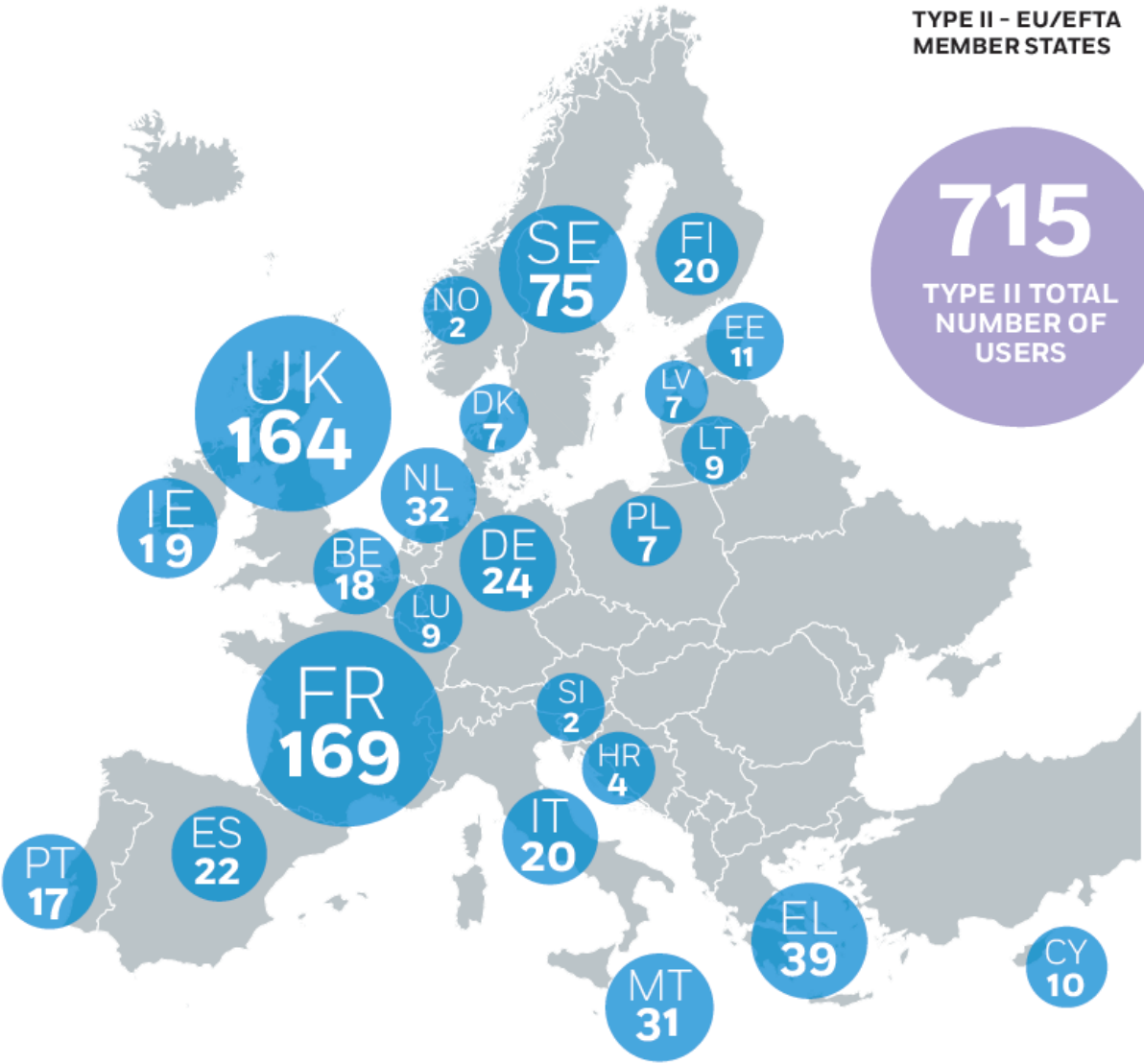
TYPE I - INSTITUTIONS/EU BODIES

167 TOTAL NUMBER OF USERS DISTRIBUTED BETWEEN

EMSA	72
EFCA	44
EC DG OLAF	26
EU NAVFOR	14
FRONTEX	6
MAOC	4
EC DG MOVE	1

TYPE II - EU/EFTA MEMBER STATES

715
TYPE II TOTAL NUMBER OF USERS

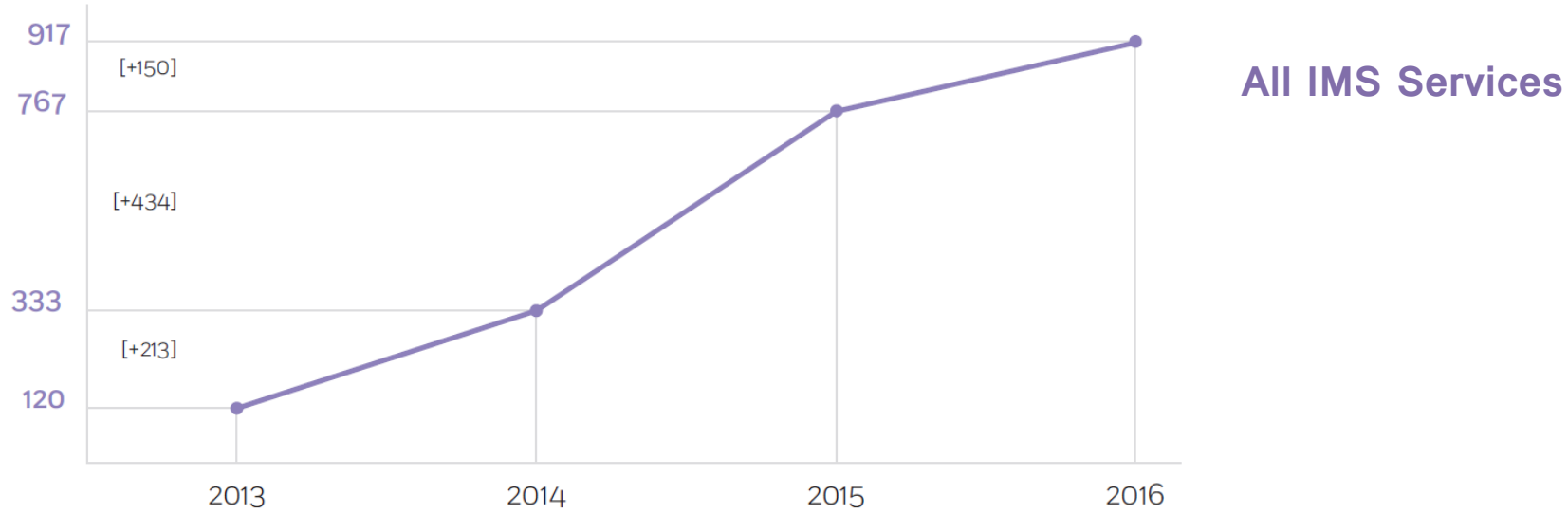


TYPE III - NON-EU MEMBER STATES

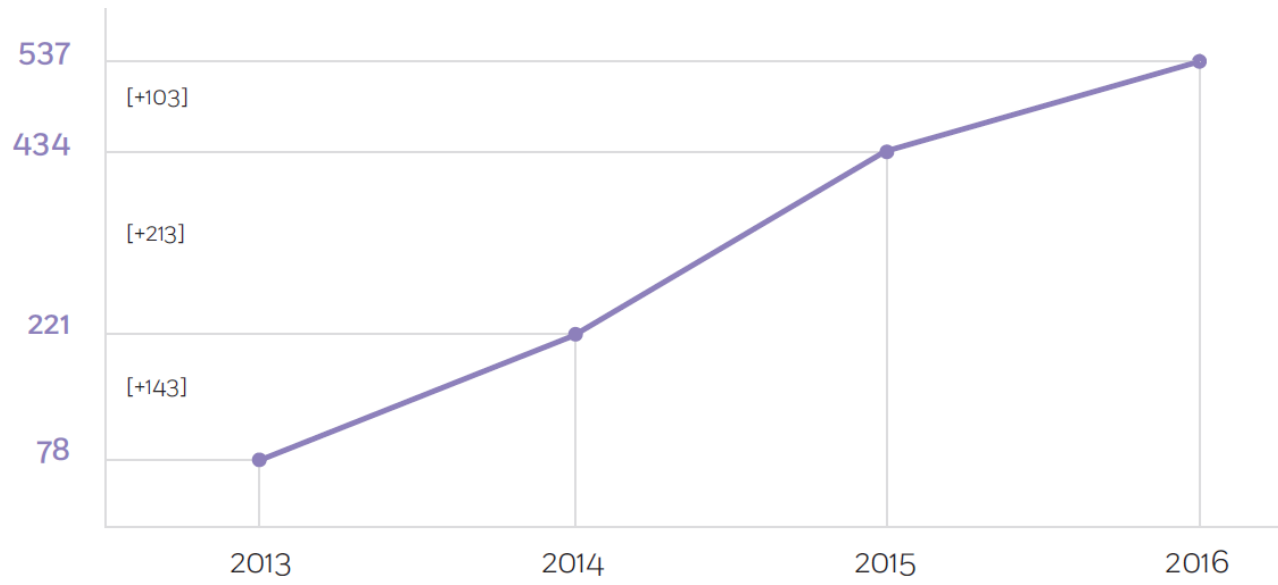
35 TOTAL NUMBER OF USERS INVOLVING

MAROCCO	16	ISRAEL	2
TUNISIA	7	JORDAN	2
ALGERIA	4	AZERBAIJAN	1
GEORGIA	2	LEBANON	1

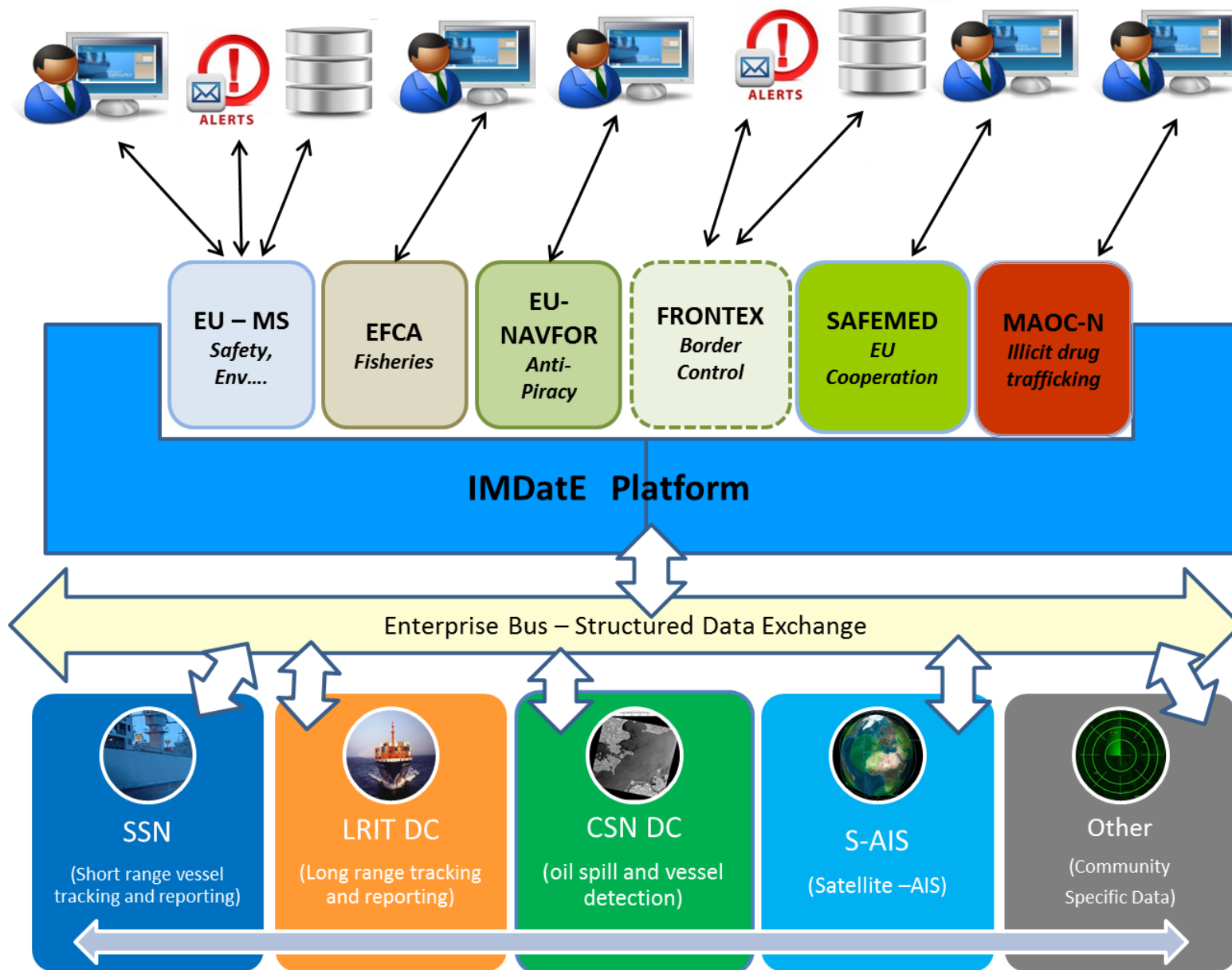
Evolution of users: 2013->2016



IMS Member State Service



Integrated Maritime Services



- “**Integration**”: bringing together and combine all available maritime and relevant ancillary information.
- “**Interoperability**”: enhancing the ability of diverse maritime (and non) systems to work together.
- “**Harmonisation**”: promoting the capability of these systems to follow common guidelines.

DATA SOURCES

Automatic Identification System, Earth Observation, Long Range Identification & Tracking, Vessel Monitoring System

FUNCTIONS/APPLICATIONS

Integrated ship tracking
Monitoring areas of interest
Vessel behaviour monitoring (under development)



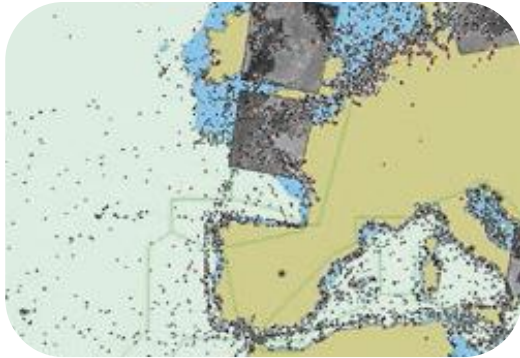
SYSTEMS

SafeSeaNet, Long Range Identification & Tracking, CleanSeaNet, THETIS

Main features of the operational service:

- A single screen combining all SafeSeaNet (SSN), CleanSeaNet (CSN), LRIT data, tailored to the user community;
- Availability of querying vessel track data for 6 months;
- Integrated ship tracking, including the correlation among different data sources;
- Availability of a global Satellite-AIS data stream;
- Availability of met-ocean data (in-situ and remote sensing);
- Integration of specific MS sources of information;
- Sharing of relevant data;
- Overlay of custom layers;
- Automated Behaviour Monitoring (surveillances and alerts);
- System-to-system interfaces.

IMS Services responding to users needs & their functions



Vessel monitoring



Oil pollution detection



Search and Rescue



Maritime Border
Control for
FRONTEX

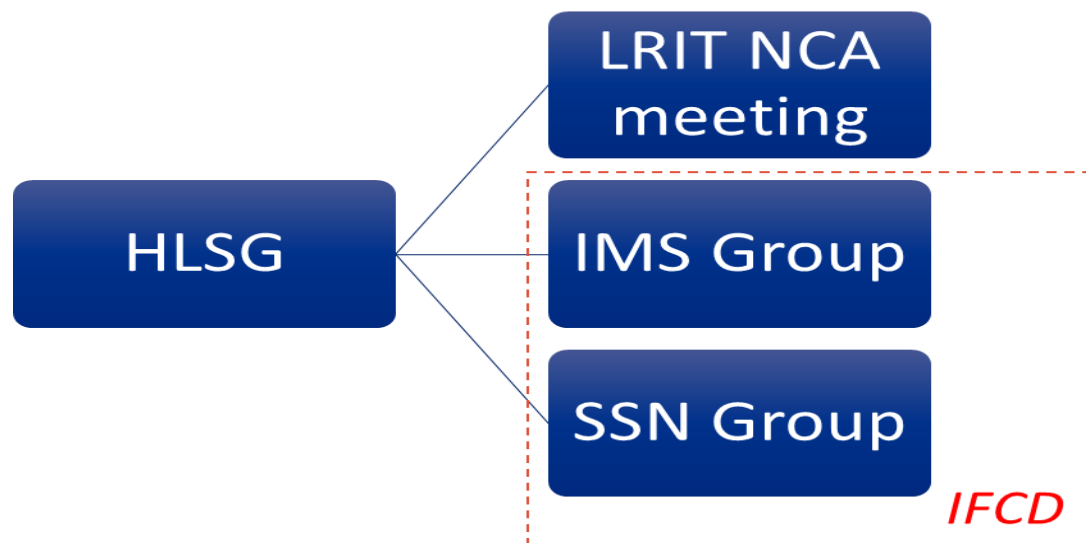


Anti-piracy
EUNAVFOR

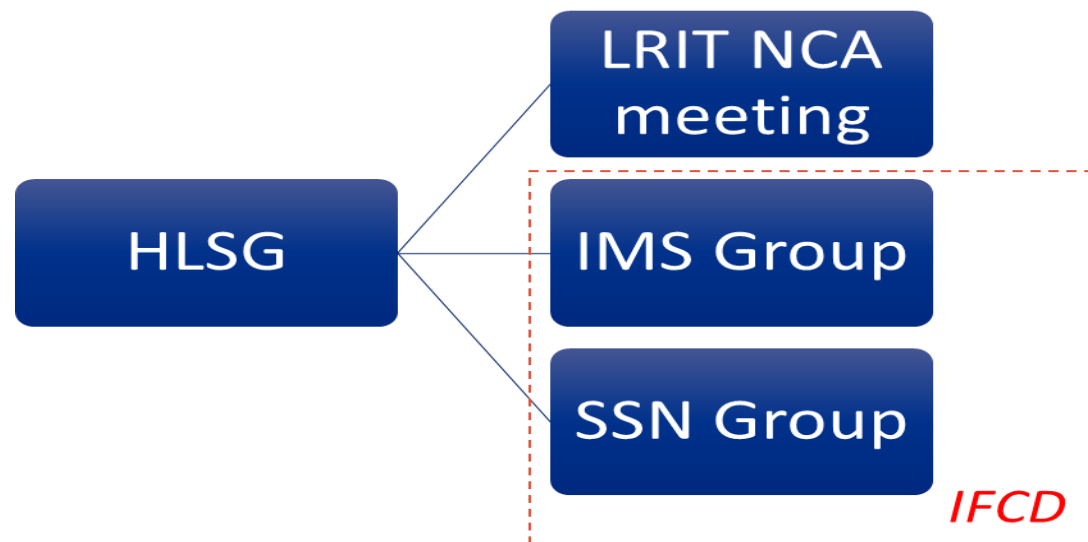


Fisheries monitoring
EFCA

IMS Governance (1/2)



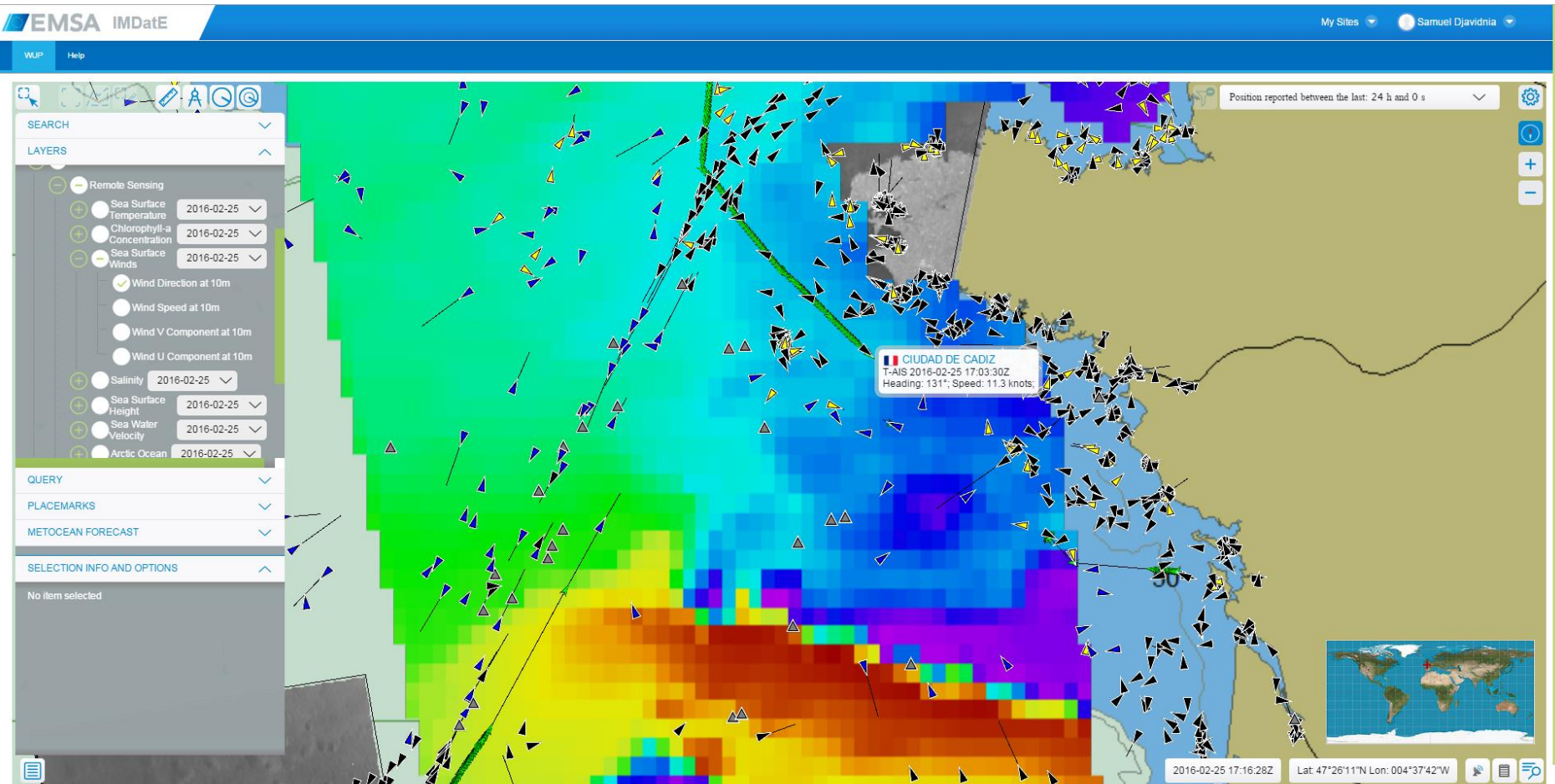
High Level Steering Group for Governance of the Digital Maritime System and Services (HLSG) –The governance group defined in Annex III of Directive 2002/59/EC (as amended), which comprises MS and Commission representatives, and which has the tasks defined in Commission Decision (EU) 2016/566 of 11 April 2016 .



Integrated Maritime Services (IMS) Group - The Group, open to representatives from all MSs, the Commission and EMSA, has the responsibility for managing technical and operational issues of the voluntary additional system functionalities. The IMS Group representatives of Member States are nominated by the Point of Contact (PoC).

Point Of Contact (PoC) for Integrated Maritime Services (IMS) – The body appointed by the Member State, which is a single point of contact for IMS related matters and assumes, at national level, responsibility for: coordination of data users and, if applicable, data providers; the designation of the National IMS Administrator; the access rights coordination with the competent authorities, and user requirements coordination.

Data integration vs data access



IMPORTANT: Data owner determines who sees what. Integration and sharing does not imply that everybody will see everything

Access to IMS

Graphical User Interfaces



SEG



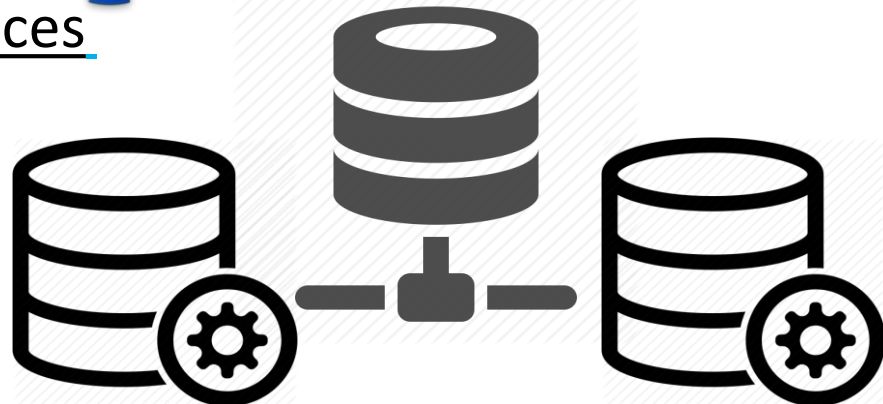
IMS App

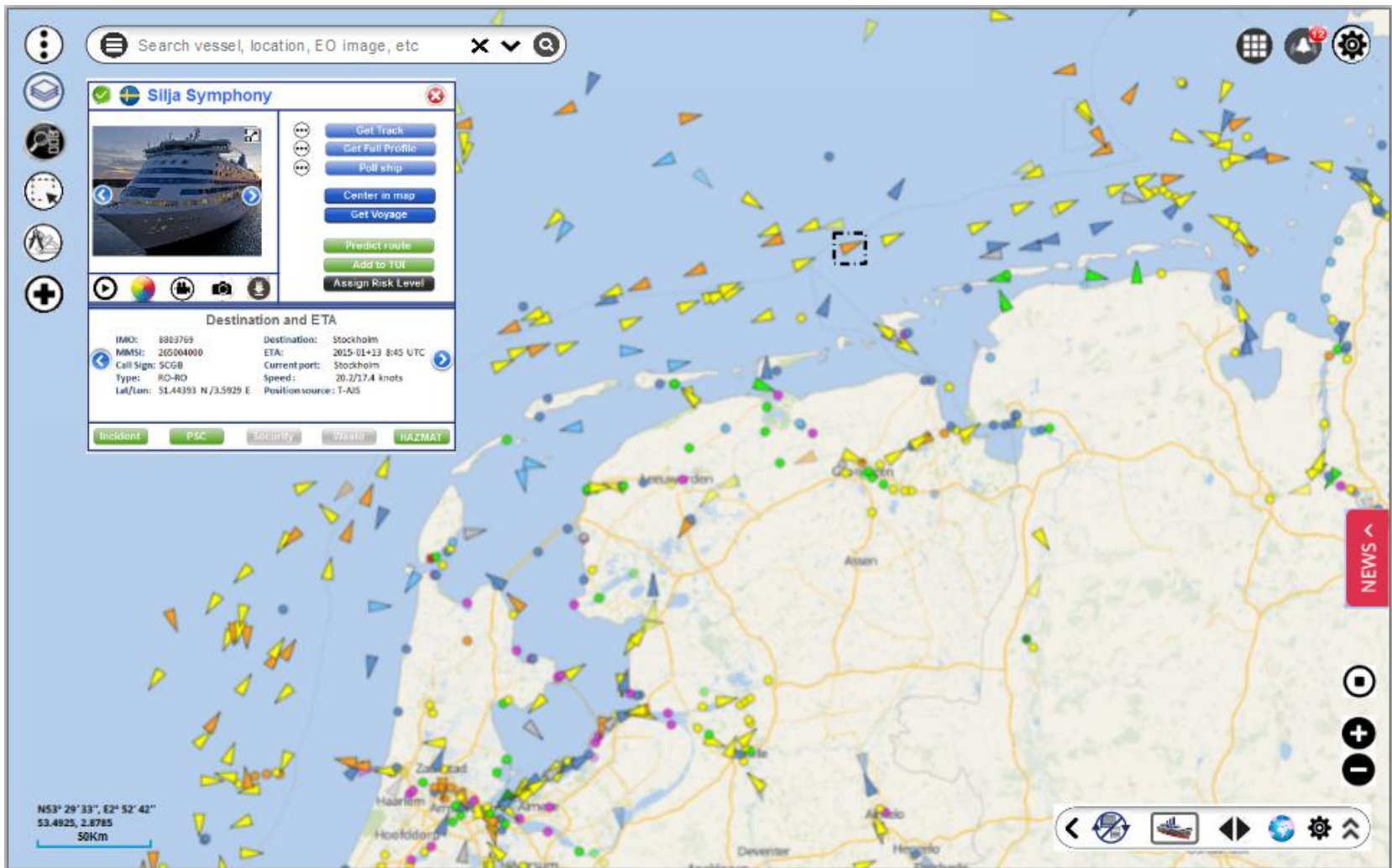
SSN Ecosystem GUI: html on desktop, laptop and tablet.

IMS Mobile App: iOS and Android on tablet and smart phone.

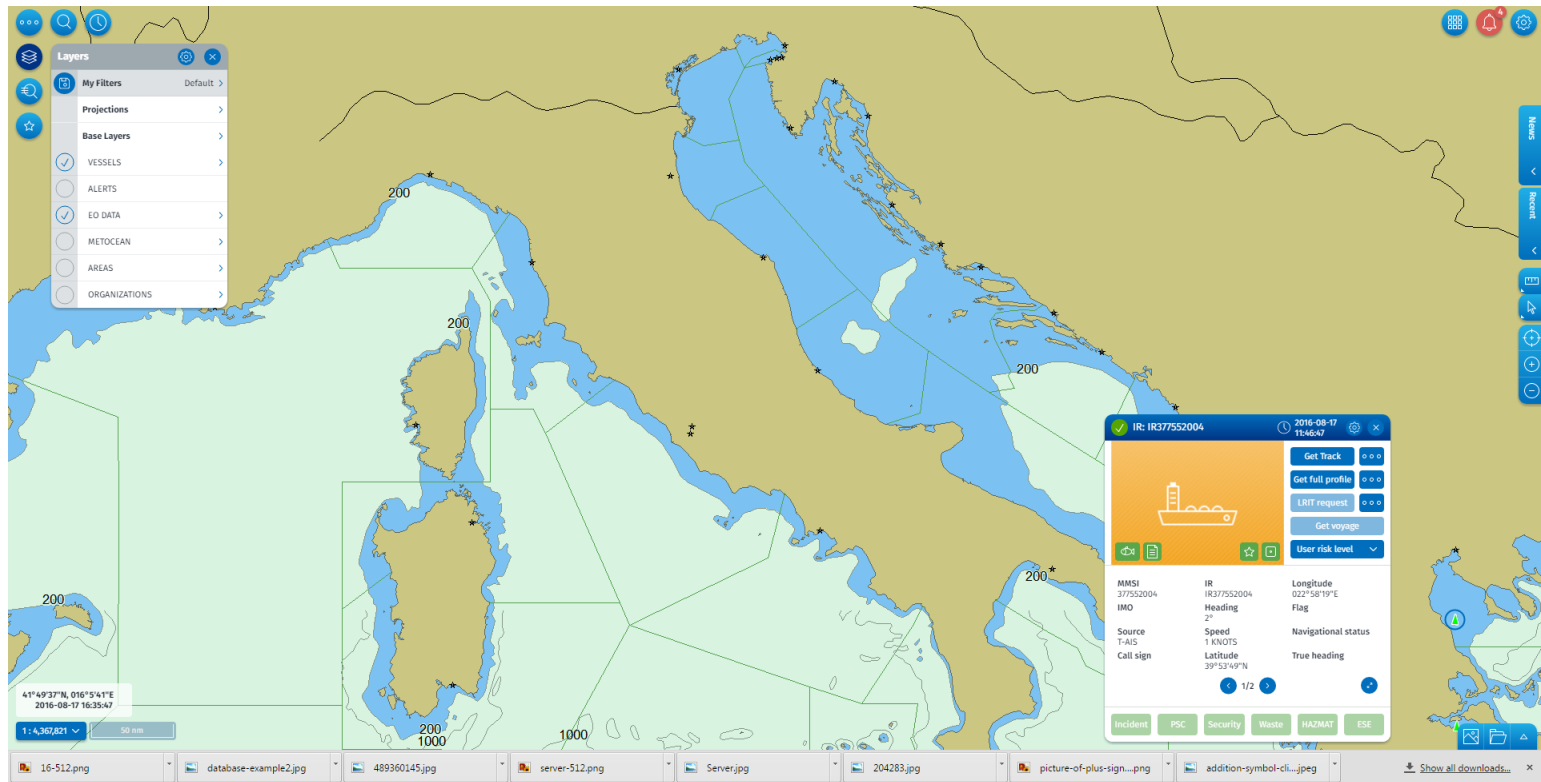


System-to-System (S2S) Interfaces





Single front-end platform (i.e. a single GUI) supporting all configurations required to cover existing legal and operational requirements for SSN, CSN, LRIT and the Integrated Maritime Services.

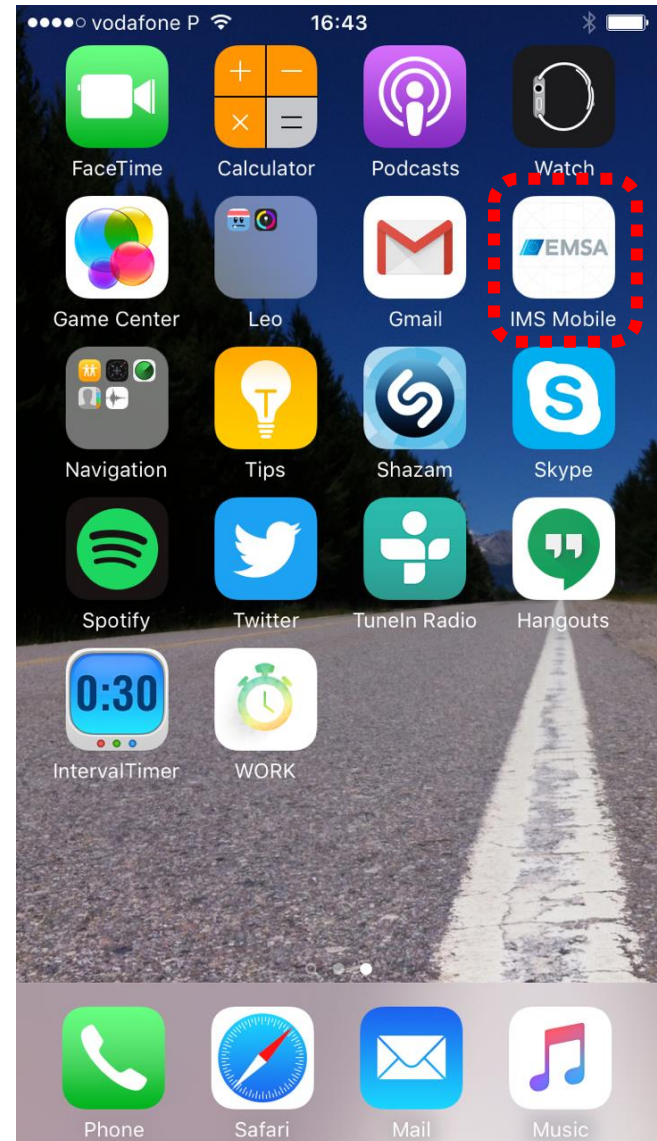
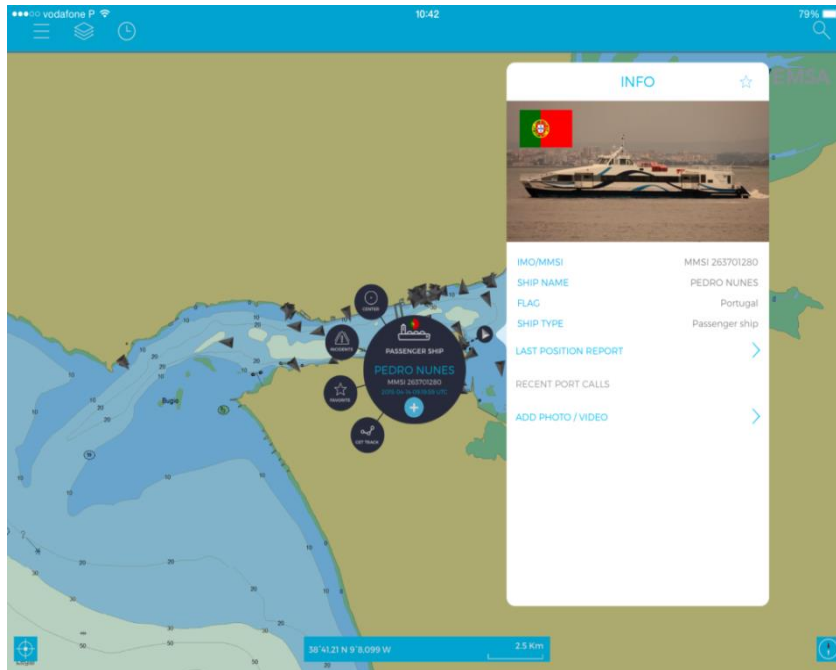


- Take the best of each existing interface
- Introduce some innovations and solutions commonly known/used
- Keep it simple and straightforward
- Do not require detailed business knowledge of each application
- Simple functionalities readily available to users
- New approach to certain data sets
- Customization for specific users/ operations has to be maintained

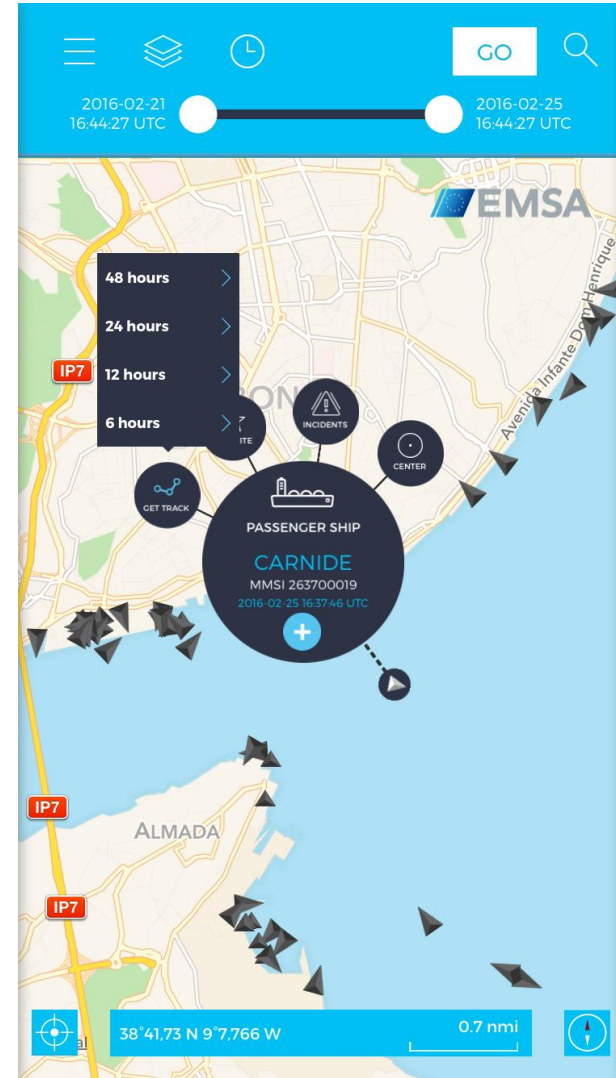
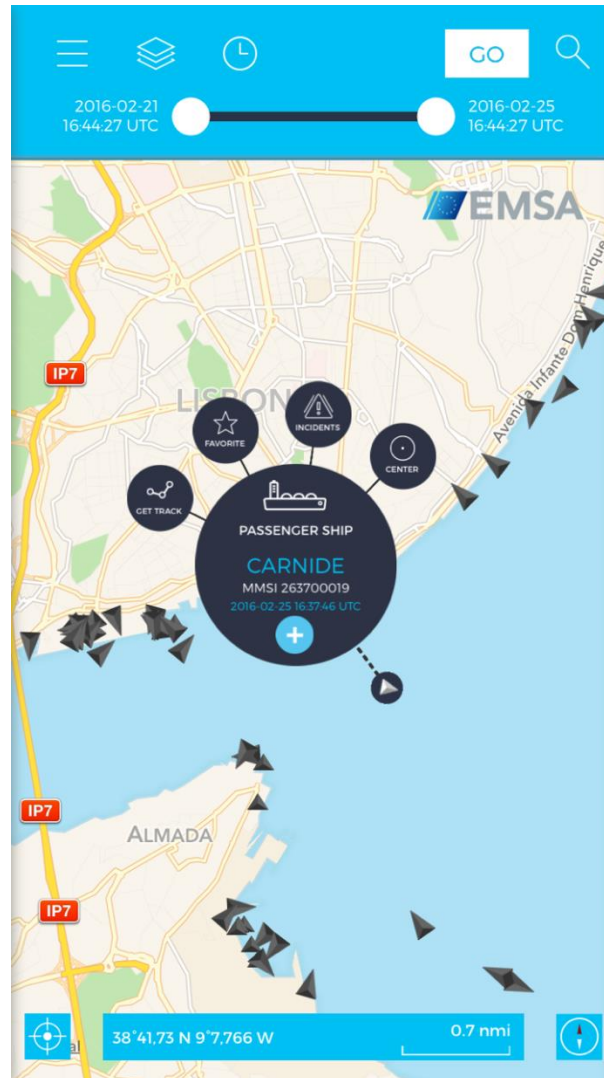
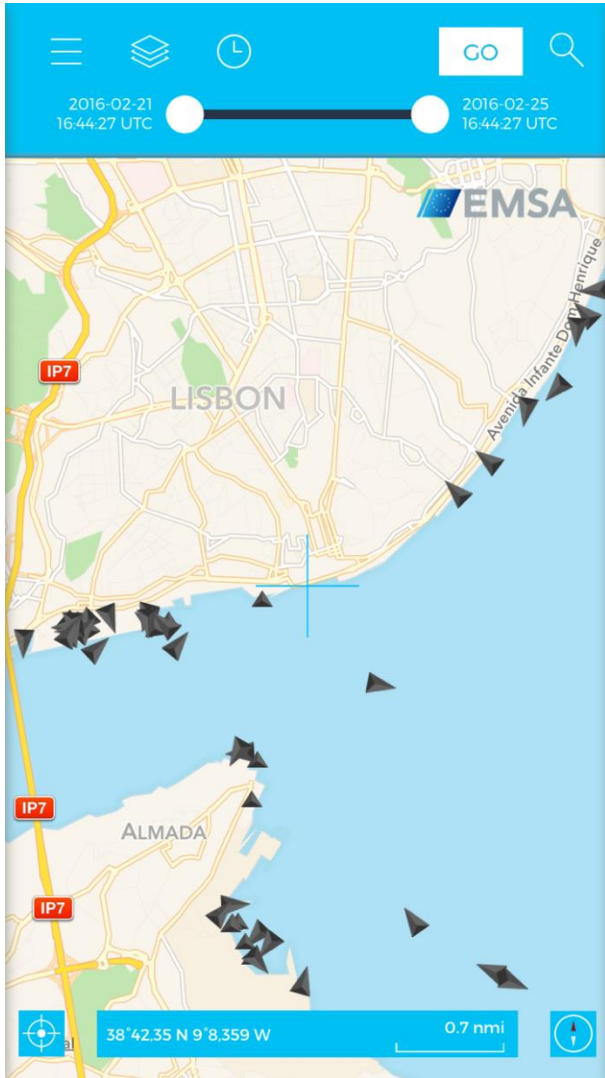
**GO-LIVE
NOVEMBER 2016**

Access to IMS – IMS App

- iOS and Android application to address a set of use cases, including:
 - ✓ Vessel position & information
 - ✓ Area centric query
 - ✓ Incident reporting
 - ✓ Oil spill monitoring and feedback
- Tablet (iPad and Android) version
- Mobile phones (iOS and Android) version

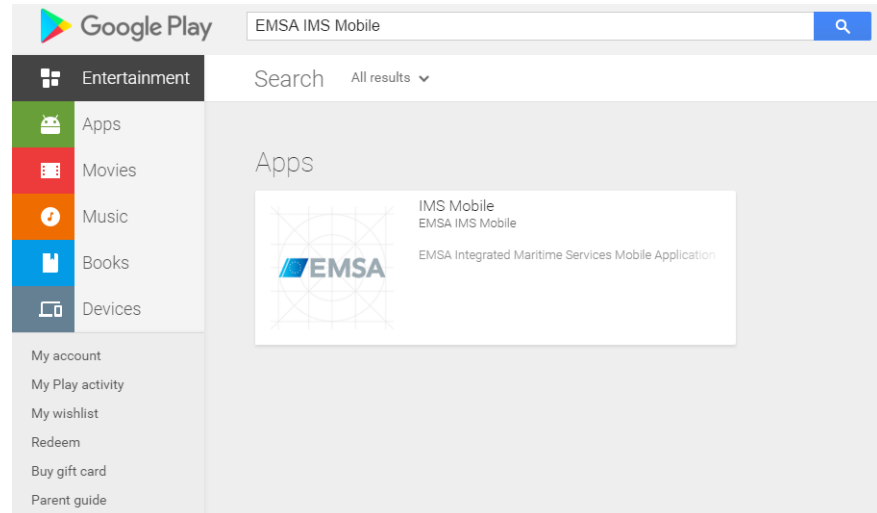


Integrated Maritime Service App



Access to IMS Mobile App

- ALL interested IMS users can have access to IMS Mobile App.
- Requests for access should be channelled through IMS MS PoC to Samy Djavidnia (SAMUEL.DJAVIDNIA@EMSA.EUROPA.EU).
- The IMS Mobile App can be downloaded from both the App Store (iOS on phone & tablet) and the Google Play Store (Android on tablet) - just search for “EMSA IMS Mobile”.



Upcoming workshops & meetings

- 2nd Automated Behaviour Monitoring (ABM) Workshop
 - Date: 28/09/2016
 - Venue: EMSA – Lisbon
 - Objectives:
 - Gather knowledge and share operational experience on the development and use of ABM algorithms by MS and EU Bodies.
 - Discuss new ABM requirements and possible future developments.

- 8th IMS Group User Consultation Meeting (UCM#8)
 - Date: 20/10/2016
 - Venue: EMSA – Lisbon
 - Objectives:
 - Update and operational feedback on IMS services and functionalities.
 - Gather and discuss implementation of new service requirements.



emsa.europa.eu

 twitter.com/emsa_lisbon

 facebook.com/emsa.lisbon

 **EMSA**
European Maritime Safety Agency